

Hard copy of this document, if not marked "CONTROLLED" in red,  
is by definition uncontrolled and may be out of date.

Process and Procedure for

## CAD Standards for Facility Documents

**REVISION**

Rev No.	DCN No.	Change Summary	Release Date	DCN Initiator	Document Owner
2	DCN3780	Updated Section 6.3.1 – As Built Final Issuance at Rev. 1. Updated contact information in Section 7.	July 2024	C. Treacy	J. Ellsworth-Howe

Prior revision history, if applicable, is available from the Document Control Office.

## Table of Contents

1	<b>INTRODUCTION</b> .....	5
2	<b>PURPOSE</b> .....	5
3	<b>FILE FORMAT</b> .....	5
3.1	Design Application Requirement.....	5
4	<b>NY CREATES FORMAT</b> .....	6
4.1	Title Block.....	6
4.1.1	Drawing Number.....	7
4.1.2	Which Documents Receive a Drawing Number? .....	8
4.1.3	Numbering System for Multi-Discipline Drawing Packages .....	8
4.2	Attributes Editor.....	9
4.2.1	Drawing Number.....	9
4.2.2	Project Number.....	9
4.2.3	Scale.....	9
4.2.4	Revision Number .....	10
4.2.5	Sheet ID.....	10
4.2.6	Drawing Title.....	10
4.2.7	Drawn By .....	10
4.2.8	Checker .....	10
4.2.9	Additional Approvals.....	11
4.2.10	Sheet Location within a Sheet Set (e.g., SHEET _ OF _) .....	11
4.3	Reference Drawing Box .....	11
4.3.1	Guidelines for Use .....	11
4.3.2	List Drawings Used in Development.....	11
4.4	Revision Status of Sheets .....	12
4.4.1	Guidelines for Use .....	12
4.5	Revision Description Box .....	12
4.5.1	Revision Number .....	13
4.5.2	Drawn By .....	13
4.5.3	Checker .....	13
4.5.4	Additional Approvals.....	13
4.6	Vendor Block.....	13

5 **DRAWING STANDARDS** ..... 14

5.1 External References (XREF) and Imported Images ..... 14

5.1.1 Insertion..... 14

5.1.2 Binding and Retention ..... 14

5.2 Model Space Vs. Paper Space ..... 15

5.2.1 Model Space..... 15

5.2.2 Paper Space..... 15

5.3 Layering Requirements ..... 16

5.3.1 AIA Standards for Layering (AIA std.)..... 16

5.3.2 Effective Layering Process ..... 16

5.4 Drawing Requirements..... 17

5.4.1 Legibility and Reproducibility ..... 17

5.4.2 Legend..... 17

5.4.3 Drawing Scale ..... 17

5.4.4 North Arrow Must be Present ..... 17

5.4.5 Blocks, Details, Hatch Patterns, etc..... 17

5.4.6 Notes Defined..... 18

5.4.7 3D Model Export..... 18

5.4.8 Dimensioning..... 18

6 **FORMAL ISSUANCE** ..... 19

6.1 Preliminary Review (30%, 60%, 90%)..... 19

6.1.1 Technical Review ..... 19

6.1.2 Drafting Review ..... 19

6.1.3 Preliminary State (30%, 60%, 90%) ..... 19

6.2 Final for Construction (100%)..... 20

6.2.1 Final Issuance at Revision 0..... 20

6.2.2 Quality Assurance Checklist (FEI-00023-F1)..... 20

6.3 As-Built..... 21

6.3.1 Final Issuance at Revision 2+..... 21

6.3.2 Quality Assurance Checklist (FEI-00023-F1)..... 22

6.4 Revision ..... 22

6.4.1 Final Issuance at Revision 2+..... 22

6.4.2 Quality Assurance Checklist (FEI-00023-F1)..... 23

6.5 Professional Engineer / Architect Certification ..... 23  
6.5.1 New York State Certification of Drawings ..... 23  
7 **CONTACTS** ..... 24  
8 **ASSOCIATED FORMS**..... 24  
8.1 FEI-00023-F1: NY CREATES Facility Drawing Quality Checklist ..... 24  
9 **ATTACHMENTS**..... 24

# 1 INTRODUCTION

To maximize usability of all NY CREATES Facility Drawings, standards must be clearly defined, and a consistent workflow created, to allow for organized accumulation work. In order for these standards to work effectively, they must be strictly adhered to on every development project from its inception. Receipt of compliant and accurate drawings are essential to Facility planning. Standards and quality must be consistent and reproducible; the standards and procedures in this document apply to all submitted materials, both hard copies and electronic files.

# 2 PURPOSE

This procedure establishes the minimum requirements for creation of all NY CREATES Facility drawings.

# 3 FILE FORMAT

## 3.1 Design Application Requirement

3.1.1 NY CREATES requires all submittals and final documents to be in AutoCAD (DWG) format.



3.1.2 If any aspect of a drawing is created using any program other than AutoCAD, provide all native files in original format upon final issuance.




3.1.3 Any applications that result in the export to a CAD file must be fully functional and have no significant loss of drawing entities / data that could result in drawing complications during future revision.

## 4 NY CREATES FORMAT

### 4.1 Title Block

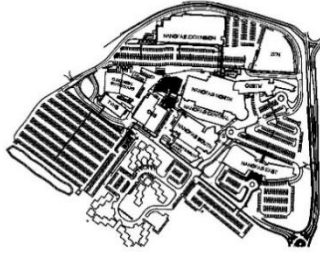
Unless otherwise approved by NY CREATES, the standard D-size (24" X 36") sheet size shall be used for all issued drawings. The NY CREATES format must be present on every sheet, with all attributes filled to completion.

**Do not reproduce, alter, and/or explode the title block.**



**NY CREATES**  
 NEW YORK CENTER FOR RESEARCH,  
 ECONOMIC ADVANCEMENT, TECHNOLOGY,  
 ENGINEERING AND SCIENCE  
 251 FULLER ROAD, ALBANY, NY 12203  
<https://ny-creates.org>

DRAWING INDEX		
DRAWING NUMBER	SHEET ID	SHEET DESCRIPTION
BLDG-X-0000		



NY CREATES 251 FULLER ROAD ALBANY, NY 12203	BLDG-X-0000	SHEET NO.
		TOTAL SHEETS
NY CREATES	PROJECT NO.	PROJECT DESCRIPTION
NY CREATES	DRAWING DATE	ESTABLISHED
NY CREATES	DRAWING DATE	ESTABLISHED
NY CREATES	DRAWING DATE	ESTABLISHED

## 4.1.1

Drawing Number

BLDG-A-0001-(XX)

## a) Buildings

Work performed outside of a building is relative to site work. In this case, the “NY CREATES” acronym is appropriate.  
(Ex: NYCR-A-XXXX)

- |                         |                           |                                  |
|-------------------------|---------------------------|----------------------------------|
| • NFE – NanoFab East    | • NFS – NanoFab South     | • TVHS – Tech Valley High School |
| • NFC – NanoFab Central | • CESTM                   | • HPM, GEN                       |
| • NFN – NanoFab North   | • Zen                     | • CT – Cooling Tower             |
| • NFS – NanoFab South   | • NFX – NanoFab Extension |                                  |

## b) Discipline Designators

Please consult National CAD Standards for a full list of Discipline Designators. Common examples are shown below:

<b>A</b> Architectural	<b>G</b> General	<b>O</b> Operations
<b>B</b> Geotechnical	<b>H</b> Hazardous Materials	<b>P</b> Plumbing
<b>C</b> Civil	<b>I</b> Information	<b>Q</b> Equipment
<b>D</b> Demolition	<b>L</b> Landscape	<b>S</b> Structural
<b>E</b> Electrical	<b>M</b> Mechanical	<b>T</b> Telecommunications
<b>F</b> Fire Protection		<b>V</b> Survey/Mapping

## c) Unique Number

This number will be provided by NY CREATES. **This number must NEVER be duplicated.**

## d) Issuance Designator

Used for preliminary issuance; this is not an issued document. It should not be used as the sole source of information out in the field. The technical content is either outdated, inaccurate, or unconfirmed.

<b>SK</b>	Sketch
<b>NFC</b>	Not for Construction
<b>ARC</b>	Archive
<b>FRO</b>	For Reference Only
<b>OBS</b>	Obsolete

#### 4.1.2 Which Documents Receive a Drawing Number?

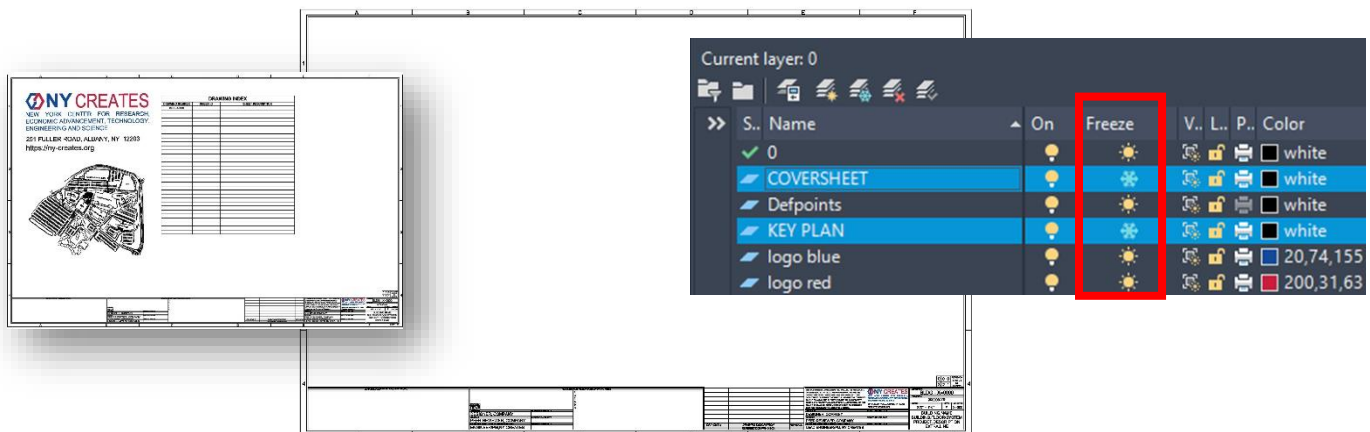
Essentially, every sheet within every drawing set generated for the site should have a drawing number present somewhere for filing purposes. The following documents require drawing numbers:

- New Drawings: Drawings numbers will be provided once development begins.
- Old Drawings: They may be outdated, but they still hold historical value. They will receive a number in order to be archived appropriately.
- Paper Drawings that have no electronic information: Documenter will write the number on the drawing, then scan it and save to a PDF.

#### 4.1.3 Numbering System for Multi-Discipline Drawing Packages

a) **Cover Sheet** – All projects that encompass multiple disciplines will have a coversheet. A cover sheet will communicate the entire drawing package in a drawing index and will be represented by its own drawing number. Its discipline designator will be classified as “G.”

- Depending on the sheet’s purpose, the cover sheet information can be turned off by freezing 2 layers, COVERSHEET and KEY PLAN.
- If more room is required for the drawing index, proceed to sheet 2.
- Key plan is on its own layer and can be used as needed.





b) **Number Sequence** – When an initial job is created, it is appropriate to reserve a group of numbers in the Numbers Log, so that all numbers related to the project are part of a sequence. For example:

**\*Unused numbers can be redistributed or canceled.**

- BLDG-G-0240
- BLDG-V-0241
- BLDG-C-0242
- BLDG-A-0243
- BLDG-F-0244
- BLDG-P-0245

4.2 **Attributes Editor**

**Section:**

4.2.1.→

4.2.2.→

4.2.3.→

4.2.4.→

4.2.5.→

4.2.6.→

4.2.7.→

4.2.8.→

4.2.9.→

4.2.10.→

Block Reference

Layer	0
Name	BASE FORMAT
Rotation	0
DRAWING#	BLDG - X=0000
PROJECT#	000000-YR
SCALE	X/X" = 1'-0"
#	#
X-000	X=000
BUILDING.NAME	BUILDING.NAME
BUILDING.FLOOR...	BUILDING.FLOOR/SYSTEM
PROJECT.DESCR...	PROJECT.DESCRPTION
EXTRA.LINE	EXTRA.LINE
DRAWN.BY	DESIGNER, COMPANY
CHECKER	PEER REVIEWER, COMPANY
ADDITIONAL.AP...	LEAD ENGINEER/PM, NY CREATES
SHEET_OF_	SHEET_ OF _

Double click title block to activate.

**NOTE:** This information, once issued at Revision 0, will remain for the life of the drawing and will NEVER be altered. For all future revisions, refer to Section 4.5.

4.2.1 Drawing Number

Refer to Section 4.1.1 for instruction.

4.2.2 Project Number

Number provided by FEG Lead Engineer / Project Manager.

4.2.3 Scale

Used as reference.

**NOTE:** Disclaimer attached to the title block requires confirmation of all measurements.

#### 4.2.4 Revision Number

Represents the number of times a facility drawing has been altered.

This number is imperative to document control, as it confirms that the user is using the most accurate information.

#### 4.2.5 Sheet ID

Unique identifier for each sheet.

Structure → (X) Discipline designator – (000) Sheet Number

#### 4.2.6 Drawing Title

- a) Building Name – NFE, NFN, NFC, NFS, NFSX, CUB, TVHS, HPM, CESTM, ZEN, NFX, and NFR
- b) Floor / System – Specify floor level and/or system
- c) Plan Description – Description of work (e.g.: Floorplan, System Reroute)
- d) Extra Line – Any pertinent keywords that will help in the search of the drawing

#### 4.2.7 Drawn By

- a) Type the designers name and the Company for which they reside
- b) The name and date will remain for the life of the drawing
- c) Signature required upon issuance

#### 4.2.8 Checker

- a) Independent peer review
- b) This name and date will remain for the life of the drawing
- c) Signature required upon issuance

4.2.9 Additional Approvals

- a) Name, title, and department of NY CREATES employee leading the project. (Ex: Mary DoGooder, FEG-Eng or Joe DoesItRight, FEG-PM)
- b) Any additional contacts pertinent to the project
- c) Signatures required upon issuance (digital signatures are acceptable)

4.2.10 Sheet Location within a Sheet Set (e.g., SHEET \_ OF \_)

- a) Please provide information by sheet.
- b) First blank is the specific sheet in work.
- c) Second blank is the total sheets in sheet-set.

4.3 **Reference Drawing Box**

4.3.1 Guidelines for Use

- a) Not required on Cover Sheet (G)
- b) Only represented on first sheet of each drawing number. Layer can be turned off at sheet 2.



- c) If more space is required, continue the table upwards.

				THIS DOCUMENT IS UNCONTROLLED. IF YOU ARE AN OPERATOR OF THIS DRAWING, YOU MUST VERIFY THE DATE OF THE LAST REVISION. SCALE THIS DRAWING TO THE LATEST REVISION.
NFC-E-0000	Second floor Renovation		0	
NFC-A-0000	Building Floorplan		2	
CNSE-C-0000	Site plan		4	
NFN-A-0000	Building floorplan.		1	
DRAWING #	DRAWING DESCRIPTION		REVISION	
	REFERENCE DRAWING BOX			
D				E

4.3.2 List Drawings Used in Development

- a) Site maps
- b) Floorplans
- c) Related disciplines
- d) Files used to create external reference block (XREF)

## 4.4 Revision Status of Sheets

### 4.4.1 Guidelines for Use

- a) Only represented on 1<sup>st</sup> sheet of each drawing. Layer can be turned off at sheet 2.

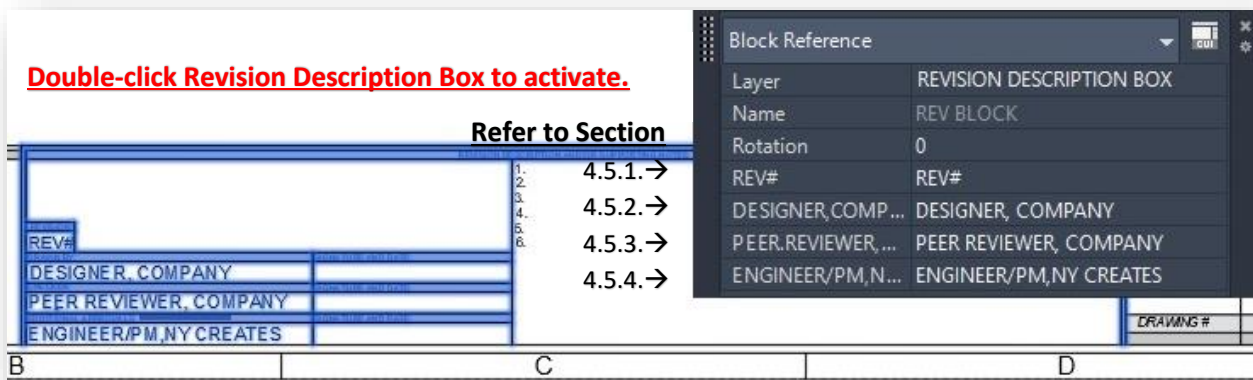


- b) The first sheet will always be revised when a drawing is altered.
- c) With the exception of the 1<sup>st</sup> sheet, only sheets touched will be revised. It is typical that a drawing package has individual sheets at different revisions.

0	0	0	0	0	0	0	0	0	0	REVISION STATUS OF SHEETS	4	<b>Rev 0</b>
9	8	7	6	5	4	3	2	1				
1	0	1	0	0	1	1	0	1		REVISION STATUS OF SHEETS	4	<b>Rev 1</b>
9	8	7	6	5	4	3	2	1				
1	0	1	2	0	2	2	0	2		REVISION STATUS OF SHEETS	4	<b>Rev 2</b>
9	8	7	6	5	4	3	2	1				
1	0	1	2	0	2	2	3	3		REVISION STATUS OF SHEETS	4	<b>Rev 3</b>
9	8	7	6	5	4	3	2	1				

## 4.5 Revision Description Box

The Revision Description Box documents all changes to the current revision. The original title block information at Rev 0 will remain for the life of the drawing, and the Revision description Box will document all changes from Revision 1 to the end of its life.



**NOTE:** This box is located on its own layer for design convenience. However, it should remain turned on as a placeholder at Rev 0, due to its requirement at Revision 1.



#### 4.5.1 Revision Number

- a) This attribute should NEVER read at Revision 0.
- b) Represents the number of times a facility drawing has been altered.
- c) This number is imperative to document control, as it confirms that the user is using the most accurate information.

#### 4.5.2 Drawn By

- a) Type the designers name and the company for which they reside.
- b) The name and date will change upon EVERY revision.
- c) Signature required upon issuance.

#### 4.5.3 Checker

- a) Independent peer review.
- b) The name and date will change upon EVERY revision.
- c) Signature required upon issuance.

#### 4.5.4 Additional Approvals

- a) Name, title, and department of NY CREATES employee leading the project (e.g.: Mary DoGooder, FEG-Eng or Joe DoesItRight, FEG-PM).
- b) Any additional contacts pertinent to the project.
- c) The name and date will change upon EVERY revision.
- d) Signatures required upon issuance (digital signatures are acceptable).

#### 4.6 **Vendor Block**

Location for all relevant vendor information:

- a) Engineering stamp
- b) Project Number
- c) Contact information and logo

## 5 DRAWING STANDARDS

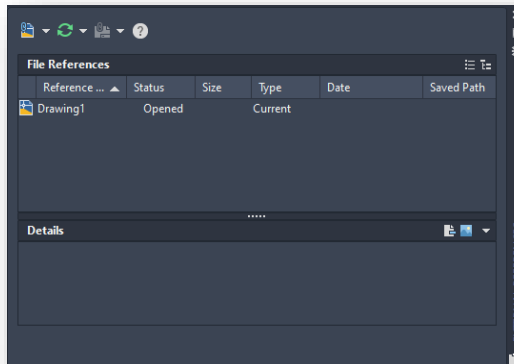
### 5.1 External References (XREF) and Imported Images

#### 5.1.1 Insertion

- a) Use the 0,0,0 reference point for all plans as block insertions and/or XREFs in model space. This allows a consistent process from one drawing to the next.
- b) Use the 0,0,0 reference point in paper space for the NY CREATES title block.

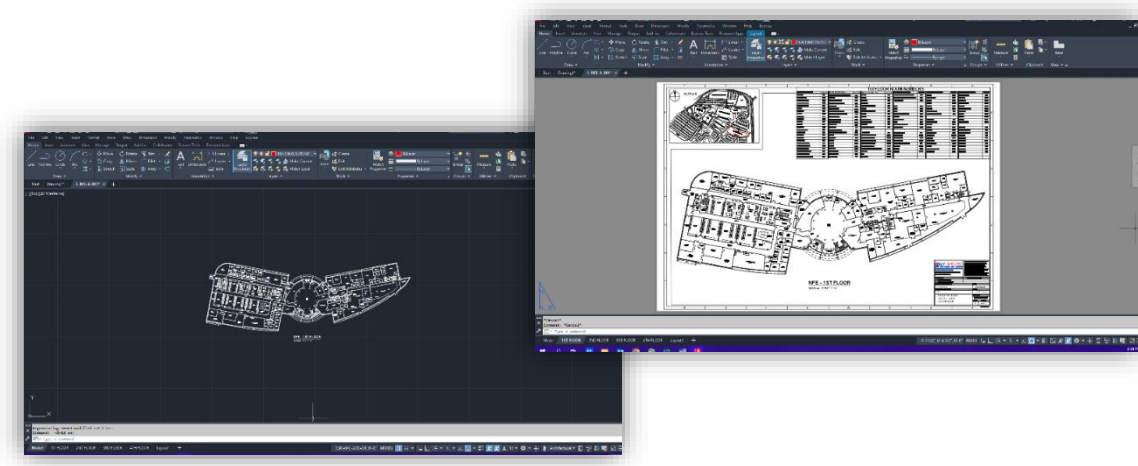
#### 5.1.2 Binding and Retention

- a) Upon completion of the project, all external references shall be bound and retained as a block within the master drawing file.
- b) This includes the title block and all image files.



**NOTE:** NY CREATES will not accept final submissions of CAD files that are not bound as one file. The File Reference box must be clear of attachments.

## 5.2 Model Space Vs. Paper Space



### 5.2.1 Model Space

- a) Only one representation of a floorplan and/or site (key) plan in model space.
- b) Upon issuance, model space should be clean of all alternate and/or repetitive information including extra section views, elevations, base plans, details, and furniture blocks such as cubicles and chairs, etc.

**NOTE:** The “Zoom All” function highlights the area of work in model space.

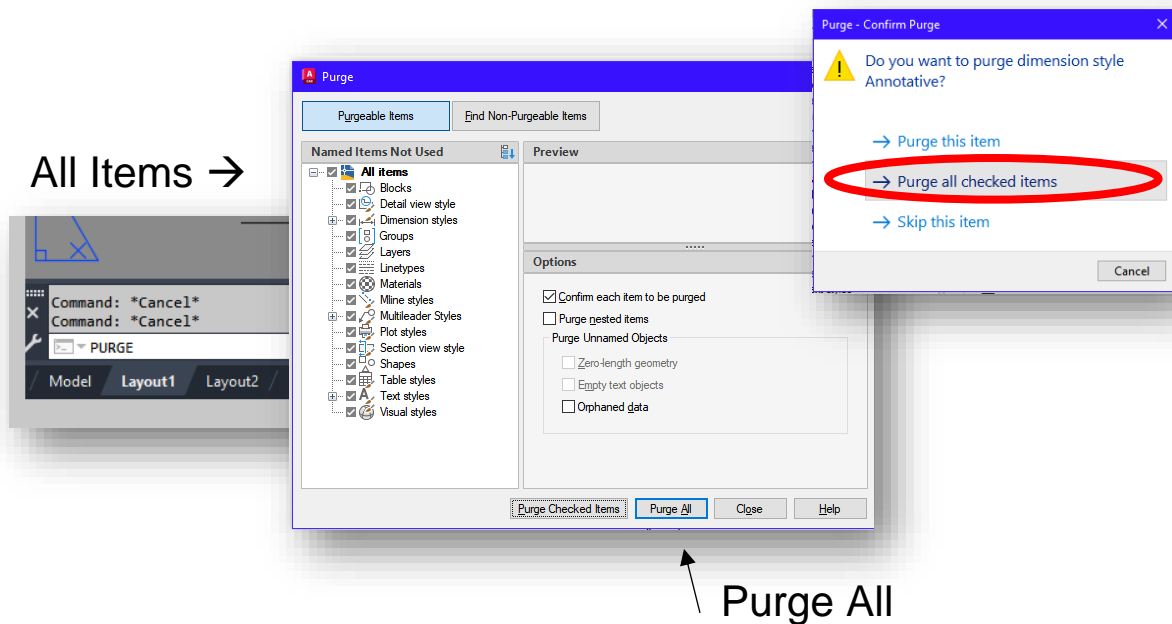
### 5.2.2 Paper Space

- a) Viewports, title block, and sheet information should only be included in Paper Space.
- b) No technical development, associated text, labels, or dimensioning in Paper Space.
- c) Label all tabs by sheet number represented in the title block of each sheet (e.g., A-100).

## 5.3 Layering Requirements

### 5.3.1 AIA Standards for Layering (AIA std.)

- NY CREATES follows the US National CAD standards for layering template creation.
- Only use the minimum number of layers necessary to separate entities within a drawing.
- The final CAD file must remove all redundant layers such as layers involved with block insertion.
- The final CAD file must be purged of ALL unused layering information. Use the “PURGE ALL” function prior to final submission.



### 5.3.2 Effective Layering Process

- Allows user to isolate / separate systems as needed for clarity and/or to eliminate clutter (e.g.: Section grid).
- Allows for effective print capabilities that are reproducible and manipulable.
- A consistent layering process allows for a smooth transition when sharing information with multiple stakeholders, such as engineering firms and engineering professionals within the organization.



## 5.4 Drawing Requirements

### 5.4.1 Legibility and Reproducibility

- a) Line weights should be in accordance with National CAD Standards and reproducible.
- b) Lines should be broken (mask function) to avoid overlap of text.
- c) Text size must be legible and free of spelling errors, including text embedded in line types. Please maintain a minimum text height of 1/8" = 1'-0" scale (1:1), unless otherwise noted.

### 5.4.2 Legend

- a) A legend shall appear on the 1st sheet of each disciplined sheet set where symbols are used.
- b) All acronyms used in drawing must be clearly define in legend.

### 5.4.3 Drawing Scale

Dimensioning eliminates the need for a scale, and is preferred. When it is inappropriate to dimension, a bar scale shall be placed on the drawing for reference only.

### 5.4.4 North Arrow Must be Present

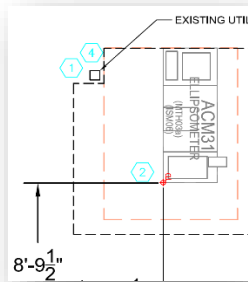
### 5.4.5 Blocks, Details, Hatch Patterns, etc.

- a) Avoid using nested blocks.
- b) All pre-defined entities (blocks, hatch patterns, symbols, etc.) shall be created on the Layer 0.
- c) Entity colors shall be defined by layer, not the entity.
- d) Detailed callouts and section views are accurately represented, and all associated locations / information relating to these entities are confirmed accurate.

### 5.4.6 Notes Defined

Shall use Arial font and be numbered. Minimum text size shall be 1/8" (.125), left justified.

- a) General Notes: Apply to entire drawing set and multiple drawing numbers. See cover sheet for reference.
- b) General Facility Discipline Notes: Apply to all sheets within a specific drawing number.
- c) General Sheet Note: Apply to only one sheet within a drawing number.
- d) Keyed Notes: Apply to an element located within the technical information. Hexagon shall be used to denote sheet keynotes embedded in technical information.



### 5.4.7 3D Model Export

NY CREATES requires that all drawing plans shall be clean and clear of erroneous additional lines created from the exportation of a 3D model to a 2D file.

For example, NY CREATES prefers that a wall is drawn using two lines, one depicting the outer most wall and the inner most wall. If more lines are needed in wall creation, the lines must be associated to an appropriate layer that represents the various construction materials of the wall.

**Layered lines affect print quality and will not be accepted.**

### 5.4.8 Dimensioning

- a) All dimensioning shall be completed in model space.
- b) Precision units shall be a minimum of 1/8" (.125).

## 6 FORMAL ISSUANCE

### 6.1 Preliminary Review (30%, 60%, 90%)

#### 6.1.1 Technical Review

Performed by NY CREATES subject matter expert leading the project (Project Manager or System Engineer).

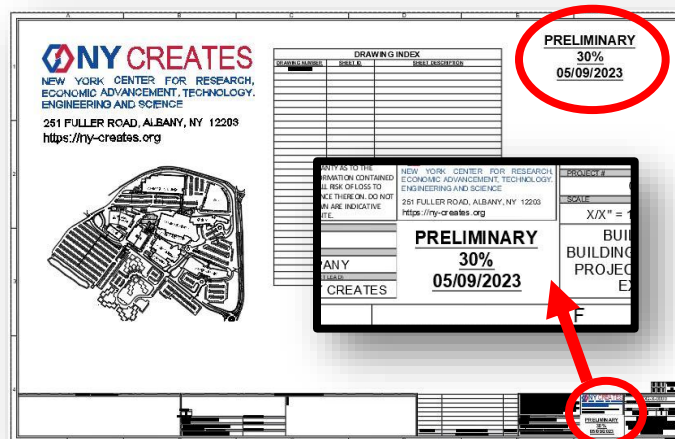
#### 6.1.2 Drafting Review

- Performed by Drafting and Design Services.
- Review does not include any technical content.
- Issued Process and Procedure document will be used as reference to ensure standards are being followed.

#### 6.1.3 Preliminary State (30%, 60%, 90%)




- Preliminary stamp is located on a layer that can be turned on and off. Please type design state (%) and current date upon submission for review.
- Markings must exist on drawing to warn user the drawing is not ready for construction, and is for **Design Purposes Only**. This drawing must NOT be used for construction.



6.2 **Final for Construction (100%)**

6.2.1 **Final Issuance at Revision 0**

- a) Preliminary stamp is removed
- b) Final for Construction typed in extra line
- c) Signatures for issuance (digital signature allowed)
  - DRAWN BY – Designer, Company Name
  - CHECKER – Peer Reviewer, Company Name
  - ADDITIONAL APPROVALS – NY CREATES Project Lead Representative (ENG., PM)
- d) Vendor Box – Stamp placed, signed, and dated (if applicable)
  - Vendor logo, contact info, etc.
- e) Hard Copies Required
  - Two (2) complete sets D-size (24x36)
  - Two (2) complete sets B-size (11x17)
- f) Thumb Drive clearly labeled with Project # and Building Name
  - Include all files associated with the project (.dwg, .rvt, .rfa, .pdf, .skp)

<small>THIS DOCUMENT IS CONFIDENTIAL AND SHALL NOT BE REPRODUCED OR REDISTRIBUTED WITHOUT PRIOR PERMISSION. NEITHER THE OPERATOR NOR THE OWNER MAKE ANY WARRANTY AS TO THE CORRECTNESS OR COMPLETENESS OF THE INFORMATION CONTAINED ON THIS DRAWING, AND THE USER ASSUMES ALL RISK OF LOSS TO PERSON AND PROPERTY AS A RESULT OF RELIANCE THEREON. DO NOT SCALE THIS DRAWING. ANY DIMENSIONS SHOWN ARE INDICATIVE ONLY AND ARE SUBJECT TO VERIFICATION ON SITE.</small>				DRAWING# <b>NFN-A-0000</b>	
<small>NEW YORK CENTER FOR RESEARCH, ECONOMIC ADVANCEMENT, TECHNOLOGY, ENGINEERING AND SCIENCE                  251 FULLER ROAD, ALBANY, NY 12203  <a href="https://ny-creates.org">https://ny-creates.org</a></small>		PROJECT# 008888-23		SCALE 1/8"=1'-0"	
DRAWN BY Mary DoGooder, Vendor Co.		SIGNATURE AND DATE <i>MDG</i> , 05/09/2023		REV# 0	
CHECKER Joe DoesItRight, Vendor Co.		SIGNATURE AND DATE <i>JDR</i> , 05/09/2023		SHEET ID A-001	
ADDITIONAL APPROVALS (NY CREATES PROJECT LEAD) Mark ItDone, NY CREATES		SIGNATURE AND DATE <i>MD</i> , 05/24/2023		NFN-A-0000 FIRST FLOOR FLOOR PLAN	
				<b>FINAL FOR CONSTRUCTION</b>	

6.2.2 **Quality Assurance Checklist (FEI-00023-F1)**

Filled to completion and expectations met.

6.3 As-Built

6.3.1 Final Issuance at Revision 1

- a) Text removed from extra line and “AS-BUILT” typed in its place.
- b) Title Block
  - Signatures for issuance DO NOT change from Rev 0’s original issuance.
  - The only change to this attribute box is the Revision and the fourth line of the title.

<small>THIS DOCUMENT IS CONFIDENTIAL AND SHALL NOT BE REPRODUCED OR REDISTRIBUTED WITHOUT PRIOR PERMISSION. NEITHER THE OPERATOR NOR THE OWNER MAKE ANY WARRANTY AS TO THE CORRECTNESS OR COMPLETENESS OF THE INFORMATION CONTAINED ON THIS DRAWING, AND THE USER ASSUMES ALL RISK OF LOSS TO PERSON AND PROPERTY AS A RESULT OF RELIANCE THEREON. DO NOT SCALE THIS DRAWING, ANY DIMENSIONS SHOWN ARE INDICATIVE ONLY AND ARE SUBJECT TO VERIFICATION ON SITE.</small>				DRAWING # <b>NFN-A-0000</b>	
<small>NEW YORK CENTER FOR RESEARCH, ECONOMIC ADVANCEMENT, TECHNOLOGY, ENGINEERING AND SCIENCE</small>		PROJECT # 008888-23		SCALE: 1/8"=1'-0"	
251 FULLER ROAD, ALBANY, NY 12203 <a href="https://ny-creates.org">https://ny-creates.org</a>		SIGNATURE AND DATE:		REVISION: <b>1</b>	
DRAWN BY: Mary DeGooder, Vendor Co.		SIGNATURE AND DATE: MDG_05/09/2023		SHEET ID: A-001	
CHECKED BY: Joe DoesItRight, Vendor Co.		SIGNATURE AND DATE: JDR_05/09/2023		TITLE: NFN-A-0000 FIRST FLOOR FLOORPLAN	
ADDITIONAL APPROVALS (NY CREATES PROJECT LEAD): Mark ItDone, NY CREATES		SIGNATURE AND DATE: MID_06/24/2023		STATUS: AS-BUILT	

- c) Reference Drawing Box
  - Update all relative drawings to current revisions.
  - Add any necessary drawings utilized during the development of the revision.

NFC-A-2222	NFC FLOORPLAN		1
NFN-A-0000	NFN STRUCTURAL		2
CNSE-C-1111	SITE MAP		5
NFN-M-0000	NFN SYSTEM UPGRADE		2
DRAWING #	DRAWING DESCRIPTION		REVISION
REFERENCE DRAWING BOX			

- d) Revision Description Box
  - Update Revision #
  - Approvals and signatures must be updated upon every revision.
  - Empty space can be used as needed for Revision Notes.

REVISION # <b>1</b>		SIGNATURE AND DATE: May B. Done, Another Co. MBD_06/18/2023		REVISION DESCRIPTION(S) OR SUPPORTING NOTES: 1. Building floorplan updated to current conditions. 2. Equipment plan updated in room 204. 3. Wiring relocated. 4. Site plan updated to include new structure. 5. 6.
DRAWN BY: May B. Done, Another Co.		SIGNATURE AND DATE: MBD_06/15/2023		
CHECKED BY: Miles A. Head, Another Co.		SIGNATURE AND DATE: MAH_06/15/2023		
ADDITIONAL APPROVALS (NY CREATES PROJECT LEAD): Sai Va Problim, FEG-ENG		SIGNATURE AND DATE: SVR_06/27/2023		

- e) Vendor Box – Stamp placed, signed and dated (if applicable)
  - Vendor logo, contact info, etc.

6.3.2 Quality Assurance Checklist (FEI-00023-F1)

Filled to completion and expectations met.

6.4 Revision

1. Building floorplan updated to current conditions. 2. Equipment plan updated in room 204. 3. Wiring relocated. 4. Site plan updated to include new structure. 5. 6.		THIS DOCUMENT IS CONFIDENTIAL AND SHALL NOT BE REPRODUCED OR REDISTRIBUTED WITHOUT PRIOR PERMISSION. NEITHER THE CONTAINER NOR THE OWNER MAKES ANY WARRANTY AS TO THE CORRECTNESS OR COMPLETENESS OF THE INFORMATION CONTAINED ON THIS DRAWING, AND THE USER ASSUMES ALL RISK OF LOSS TO PERSON AND PROPERTY AS A RESULT OF RELIANCE THEREON. DO NOT SCALE THIS DRAWING. ANY DIMENSIONS SHOWN ARE INDICATIVE ONLY AND ARE SUBJECT TO VERIFICATION ON SITE.	NY CREATES NEW YORK CENTER FOR RESEARCH, ECONOMIC ADVANCEMENT, TECHNOLOGY, ENGINEERING AND SCIENCE 251 FULLER ROAD, ALBANY, NY 12203 https://ny-creates.org	DRAWING # NFN-A-0000 PROJECT # 008888-23 SCALE 1/8"=1'-0" SHEET # 2 A-001
1 May B. Done, Another Co. MBD, 06/17/2025 Miles A. Head, Another Co. MAH, 06/16/2023 Sali Va Problim, FEG-ENG SVP, 06/16/2023	NFN-A-2222 NFC FLOORPLAN 1 NFN-A-0000 NFN STRUCTURAL 2 CNSE-C-1111 SITE MAP 5 NFN-M-0000 NFN SYSTEM UPGRADE 1 DRAWING # DRAWING DESCRIPTION REVISION REFERENCE DRAWING BOX	Mary DoGooder, Vendor Co. MDC, 06/16/2025 Joe DoesItRight, Vendor Co. JDR, 06/16/2023 Mark ItDone, NY CREATES MID, 06/24/2025	NY CREATES NEW YORK CENTER FOR RESEARCH, ECONOMIC ADVANCEMENT, TECHNOLOGY, ENGINEERING AND SCIENCE 251 FULLER ROAD, ALBANY, NY 12203 https://ny-creates.org	DRAWING # NFN-A-0000 PROJECT # 008888-23 SCALE 1/8"=1'-0" SHEET # 2 A-001 NFN-A-0000 FIRST FLOOR FLOORPLAN

6.4.1 Final Issuance at Revision 2+

- a) Text removed from extra line
- b) Title Block
  - Signatures for issuance do not change from Rev 0's original issuance.
  - The only change to this attribute box is the Revision, and the fourth line of the title that can be used as needed. Keep empty if no information is provided.

THIS DOCUMENT IS CONFIDENTIAL AND SHALL NOT BE REPRODUCED OR REDISTRIBUTED WITHOUT PRIOR PERMISSION. NEITHER THE CONTAINER NOR THE OWNER MAKES ANY WARRANTY AS TO THE CORRECTNESS OR COMPLETENESS OF THE INFORMATION CONTAINED ON THIS DRAWING, AND THE USER ASSUMES ALL RISK OF LOSS TO PERSON AND PROPERTY AS A RESULT OF RELIANCE THEREON. DO NOT SCALE THIS DRAWING. ANY DIMENSIONS SHOWN ARE INDICATIVE ONLY AND ARE SUBJECT TO VERIFICATION ON SITE.	NY CREATES NEW YORK CENTER FOR RESEARCH, ECONOMIC ADVANCEMENT, TECHNOLOGY, ENGINEERING AND SCIENCE 251 FULLER ROAD, ALBANY, NY 12203 https://ny-creates.org	DRAWING # NFN-A-0000 PROJECT # 008888-23 SCALE 1/8"=1'-0" SHEET # 2 A-001
DRAWN BY Mary DoGooder, Vendor Co. MDC, 06/16/2025 Joe DoesItRight, Vendor Co. JDR, 06/16/2023 ADDITIONAL APPROVALS, IF ONE OR MORE PROJECT LEADS Mark ItDone, NY CREATES MID, 06/24/2025	SIGNATURE AND DATE MDC, 06/16/2025 JDR, 06/16/2023 SIGNATURE AND DATE MID, 06/24/2025	NFN-A-0000 FIRST FLOOR FLOORPLAN

- c) Reference Drawing Box
  - Update all relative drawings to current revisions.
  - Add any necessary drawings utilized during the creation of the revision.

NFC-A-2222	NFC FLOORPLAN	1
NFN-A-0000	NFN STRUCTURAL	2
CNSE-C-1111	SITE MAP	5
NFN-M-0000	NFN SYSTEM UPGRADE	2
DRAWING #	DRAWING DESCRIPTION	REVISION
REFERENCE DRAWING BOX		

d) Revision Description Box

- Update Revision #
- Approvals and signatures must be updated upon every revision.

REVISION DESCRIPTION AND/OR SUPPORTING NOTES	
REVISION	1. Tool Footprint adjusted in room 246. 2. Piping configuration updated to as-built condition. 3. 2 pressure valves removed, and updated piping configuration. 4. 5. 6.
2	
DESIGNED BY	SIGNATURE AND DATE
Milly Meter, Bog Ole Co.	AM, 07/29/2022
CHECKED BY	SIGNATURE AND DATE
Russ Tinayle, Big OleCo.	RUT, 07/29/2022
ADDITIONAL APPROVALS (BY DATE)	SIGNATURE AND DATE
Alec Tricity, FEG-ENG	AT, 08/04/2023

- Empty space can be used as needed for Revision Notes.

e) Vendor Box – Stamp placed, signed, and dated (if applicable)

- Vendor logo, contact info, etc.

f) Hard Copies Required

- Two (2) complete sets D-size (24x36)
- Two (2) complete sets B-size (11x17)

g) Thumb Drive clearly marked with Project # and Building Name

- Include all files associated with the project (.dwg, .rvt, .rfa, .pdf, .skp)

6.4.2 Quality Assurance Checklist (FEI-00023-F1)

Filled to completion and expectations met.

6.5 **Professional Engineer / Architect Certification**

6.5.1 New York State Certification of Drawings

It is the responsibility of our vendors producing NY CREATES facility drawings to certify all work with a New York State Seal stamp. This stamp must include the engineer’s certification number, signature, and the date of drawing release.

## 7 CONTACTS

Juliana Ellsworth-Howe, CAD Support Specialist: [JEllsworth-Howe@ny-creates.org](mailto:JEllsworth-Howe@ny-creates.org)

Daniel Santoyo, CAD Support Specialist: [DSantoyo@ny-creates.org](mailto:DSantoyo@ny-creates.org)

Heather Fariello, Associate Vice President of Facility Engineering and Infrastructure: [hfariello@ny-creates.org](mailto:hfariello@ny-creates.org)

Mary Kochan, Document Control: [mkochan@ny-creates.org](mailto:mkochan@ny-creates.org)

Caitlin Treacy, Document Control: [ctreacy@ny-creates.org](mailto:ctreacy@ny-creates.org)

## 8 ASSOCIATED FORMS

8.1 FEI-00023-F1: NY CREATES Facility Drawing Quality Checklist

## 9 ATTACHMENTS

Attachment A: Cover Page

Attachment B: D-Size Format





