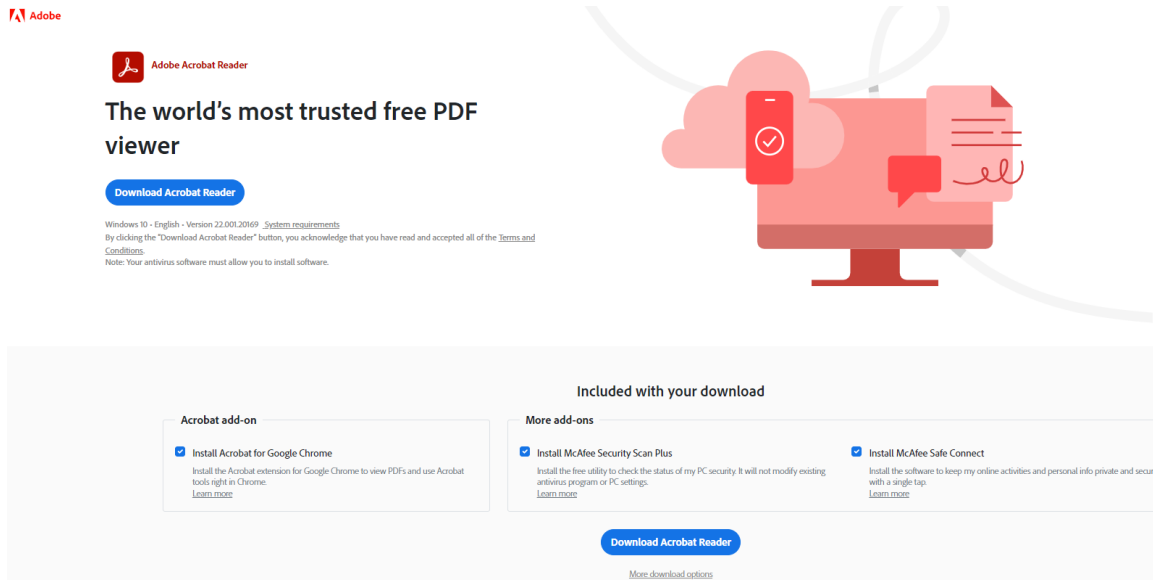
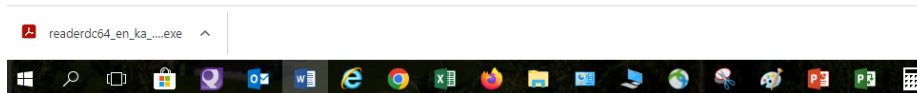
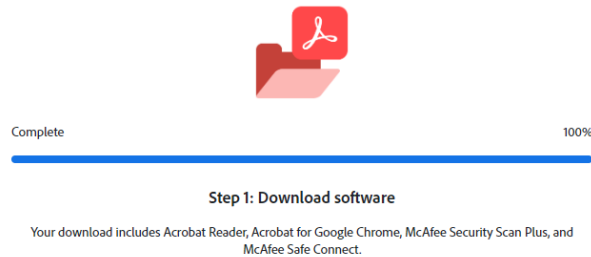


# Updating Adobe for EHS Tests (IF NEEDED)

1. Download the latest version of Adobe Reader by going to <https://get.adobe.com/reader/>
2. The following page should appear:

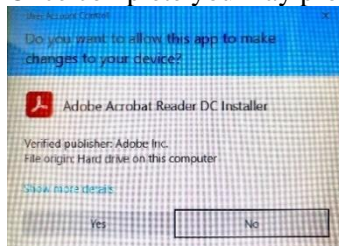


Then click the blue “Download Acrobat Reader button”



Once you click the “Download Acrobat Reader button” you will see a small icon box in the bottom left of your screen, click on the up ^ arrow and select open.

3. Click yes in the pop up dialog box below to allow the program to download.
4. Once complete you may proceed with the downloading and submitting of your EHS test.




## Downloading and Submitting of EHS Tests

1. Open the test you need to take using Microsoft Edge (formally internet explorer & using a different browser like Firefox, Chrome etc. may not work) to access the internet or intranet. You should not be sending a test that you already saved to your computer. The tests change on occasion and using an old test could result in improper grading.
2. **IF** you open the test and it looks like the following with the colored bar across the top of the test and a colored submit form button on the right take the test and continue to **step #10**

This file includes fillable form fields.  
You can print the completed form and save it to your device on Acrobat.com.

Fill & Sign Comment  
Highlight Existing Fields Submit Form

 COLLEGES OF NANOSCALE  
SCIENCE + ENGINEERING  
SUNY POLYTECHNIC INSTITUTE

Safety Orientation Test  
September 9, 2015

**PLEASE PRINT NEATLY SO WE CAN ENTER YOUR INFORMATION ACCURATELY**

Email:  Supervisor:  Date:   
use mm/dd/yyyy format

Last Name:  First Name:  Company/ Dept.:

3. If upon opening, the document appears as any of the following you will need to continue these instructions.

SUNY POLYTECHNIC INSTITUTE CLEANROOM SAFETY TEST EHS 11/16/2010 Submit Form

Email:  Supervisor:  Date:   
Last Name:  First Name:  Company/Dept. Air Liquide

Check all answers that apply. You must score at least an 80% to pass the test.

1. How do you report an emergency on the CNSE campus?

a. Call 911  
 b. Call your mom  
 c. Knock & and leave the area

Filling of form fields is not supported.

Automatic Zoom: 1

SUNY POLYTECHNIC INSTITUTE LABORATORY SAFETY QUIZ 2015

Email:  Supervisor:  Date:   
Last Name:  First Name:  Company/Dept. Air Liquide

1. What is the minimum PPE required when handling chemicals in the lab:

a. Lab coat, nitrile gloves, safety glasses, face shield and closed toe/heel shoes

SUNY POLYTECHNIC INSTITUTE Safety Orientation Test February 16, 2017

Email:  Supervisor:  Date:   
Last Name:  First Name:  Company/ Dept.:

1. What do you do if you see a blue flashing light (TGMS alarm) in a cleanroom?

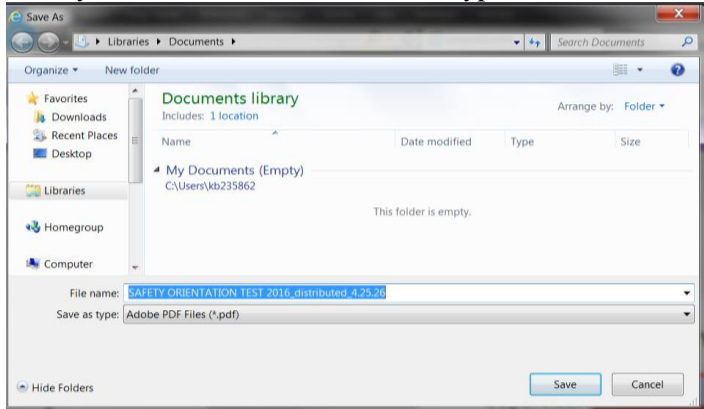
a. Contact your supervisor  
 b. Go to lunch

4. **First you will need to save it to your computer.**

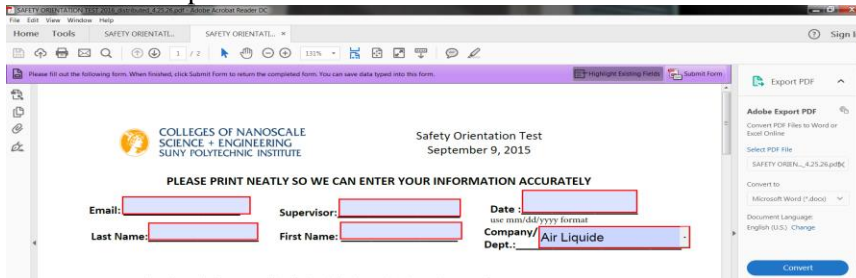
- This can be done by left clicking on the save icon which looks like a disk in the top left corner



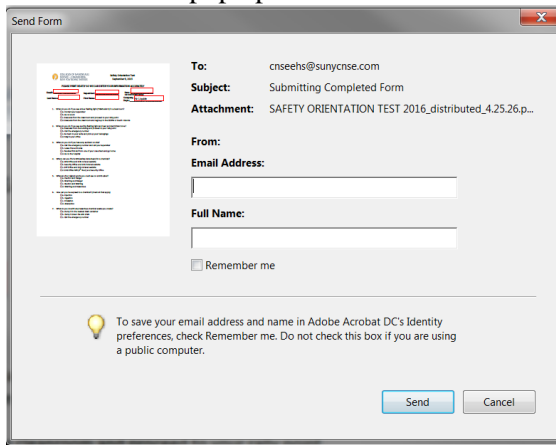
- It is recommended to save the test to your desktop Then determine where and by what name you would like to save it as and type that in the blue section shown below.



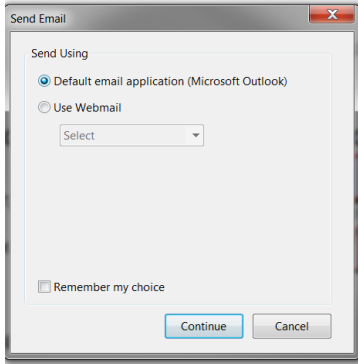
- Once the test has been saved you can close the web browser
- Open the test you saved to your computer.
- At this point you should now have a test that looks like the following with a colored banner at the top with a colored submit form button:



- Take the test filling out all fields and answering all questions.
- Once the test is complete you can now submit the test.
- Click on the Submit form in the upper right hand corner of the colored banner.
- A window will pop up that looks like this:

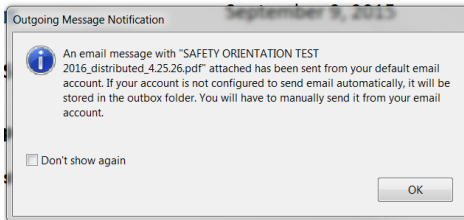


- Fill in your email address and full name in the white fields.
- Click on send.
- The following window may pop up:



If this does pop up make sure default email application is checked as seen to the left  
Then hit continue.

17. Once you hit continue another window will pop up confirming you sent an email with your test attached.



18. Click ok and the window will disappear. It is a good idea to save the completed test at this step in case you have issues.

19. **Once EHS receives your email you will get a confirmation e-mail.**

**This may take a couple of minutes. If you do not get a confirmation email in 15 minutes**

**Please send your completed test (with answers) to:**

**[ehs@ny-creates.org](mailto:ehs@ny-creates.org)**

**Do not send scanned copies!**